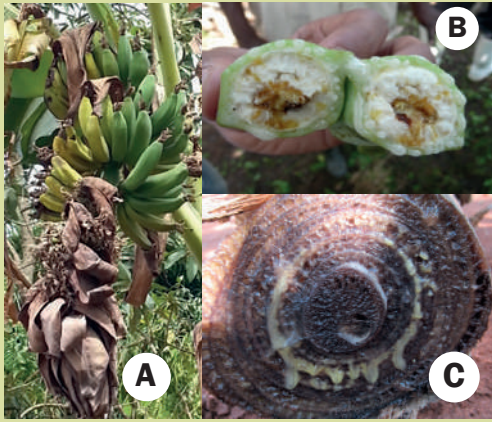


FACTSHEET: BANANA PESTS AND DISEASES

Banana Bacterial Wilt (BBW)



Symptoms:

- Premature and uneven ripening of the fruit fingers (**See A**).
- Progressive wilting & drying of the male bud towards the banana fruits (**See A**).
- Discolouration in the fruit pulp (**See B**)
- Yellowish ooze shortly after cross-sectional cutting of the pseudostem (**See C**).

Control/Management:

- Avoid transfer of infected plant parts.
- Break off male bud with a forked stick.
- Cut affected stem off ground.
- Disinfect contaminated tools with fire or jik.
- Suspend cutting of fresh leaves within affected field.

Control/Management:

- Use resistant varieties e.g Kabana6H, NAROBans 1,2,3,4,5
- Improve soil fertility and moisture conservation.
- Prune off affected leaves.
- Use recommended plant spacing (3mx3m)

Symptoms:

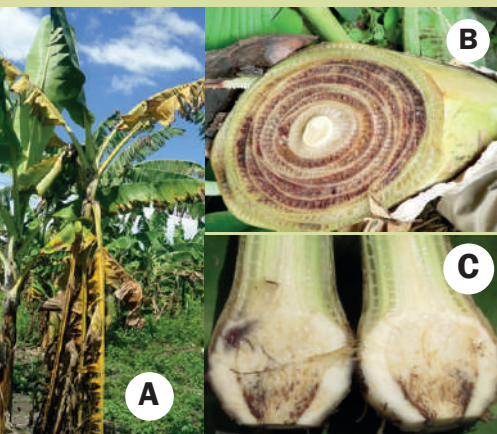
- Blackish-brown streaks/spots on the leaves with a persistent grey center (**See A**).

Black Sigatoka



Blackish-brown streaks on leaves.

Fusarium Wilt



Symptoms:

- Collapsed mature leaves at the petiole forming skirting around infected plant (**See A**).
- Splitting of the pseudostem.
- Vascular discoloration. pseudostem and corm upon cross-sectional cutting (**See B&C**)

Control/Management:

- Once plant is infected, replace them with resistant varieties. This disease cannot be managed with chemical pesticides.
- Minimise surface run offs in within affected fields.

For more information, go to: www.banana.go.ug



+256 414 699 242



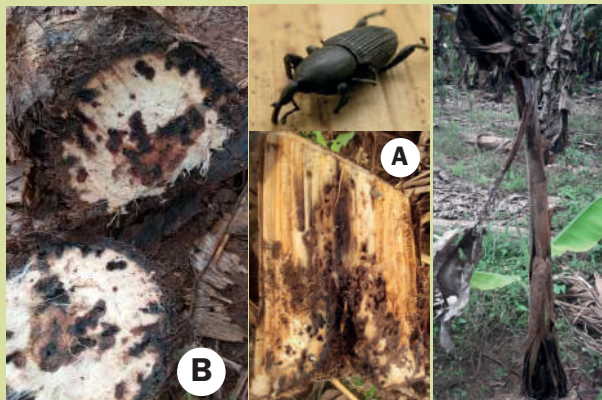
@NARObanana



Bananaprogram

FACTSHEET: BANANA PESTS AND DISEASES

Banana Weevils



Weevil damage in old deteriorating corms and pseudostems

Symptoms:

- Damage by dark brown tunnels in the corm, that disrupt up ward movement of water and nutrients (**See A&B**).
- Snapping of pseudostem (breaking from the ground level).

Control/Management:

- Use resistant plants.
- Plant clean suckers.
- Remove old corms, chop them into small pieces, spread them out to dry, to destroy the breeding ground where weevils lay eggs.
- Use pseudostem traps to capture the weevils.

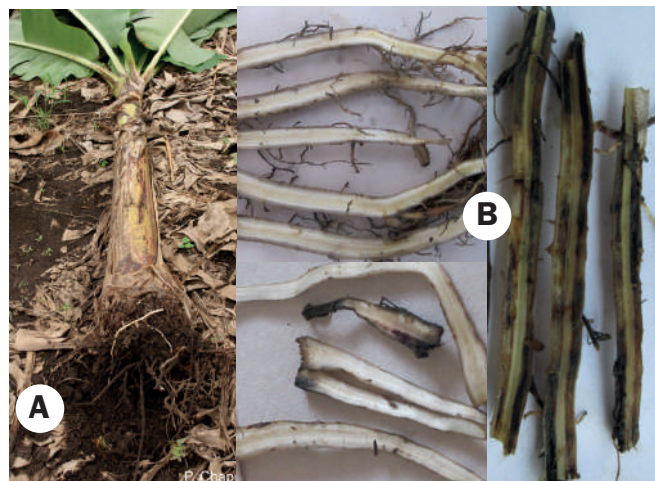
Nematodes

Control/Management:

- Plant clean suckers.
- Use resistant varieties such as Kabana6H, Kabana 7H, NAROBan 1,2,3,4&5.

Symptoms:

- Roots have red-blackish lesions and necrosis (**See B**).
- Toppling: The plant falls and gets uprooted together with its roots (**See A**).



Banana Rust Thrips



The discoloration is only on the surface of fruit peel but the fruit pulp is not affected.

Symptoms:

- Banana peel appears brown, purplish to black.
- The discoloration is only on the surface of fruit peel but the fruit pulp is not affected (**See A**).
- Cracked fruit peels causing scarring

Control/Management:

- Use healthy planting materials
- Cut down & burry affected banana fruits.
- Bagging of inflorescence immediately after flowering with polythene bags of 0.08mm thickness that is perforated at 76mm interval with hole of 12.7mm to cover the bunch as it opens.

For more information, go to: www.banana.go.ug



+256 414 699 242



@NARObanana



Bananaprogram